

**Annual Report  
2010/2011**

## **Contents:**

- 1. Foreword**
- 2. Understanding MAPPA**
- 3. Area Summary**
- 4. Key Achievements / Objectives**
- 5. Statistics**
- 6. Contacts**
- 7. Explanation of Terms**



## 1. Foreword

### Northern Community Justice Authority (NCJA)

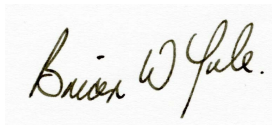
#### MAPPA Strategic Oversight Group - Chair's Comment

This is the fourth annual report on the operation of the Multi Agency Public Protection Arrangements (MAPPA) in the NCJA area, having been prepared to meet the requirements placed upon the Responsible Authorities by legislation to keep the arrangements under review and to publish an Annual Report.

The MAPPA Strategic Oversight Group was formed three years ago with the remit to continually review process and practice, both operationally and from a strategic perspective, to ensure that we move forward with cognisance of any updated or new legislation or identified best practice and thus strengthen our approach towards the management of offenders and public protection

The NCJA covers a vast geographic area with the Responsible Authorities, Duty to Cooperate and other agencies involved in the process continuing to, as far as is possible, minimise the risks posed to the public through the cohesive and effective assessment and management of offenders.

This Annual Report presents information relative to the positive work and commitment that has been undertaken by all agencies in effort to protect the people of the Grampian, Highland and Islands area.



**Brian Yule**  
Detective Superintendent,  
Grampian Police & Chair of MAPPA Strategic Group

## What are Multi-Agency Public Protection Arrangements

MAPPA are designed to manage the risk posed by certain sexual and certain violent offenders. They bring together the Police, Local Authorities, Scottish Prison Service and National Health Boards in Scotland into what are known within MAPPA as the Responsible Authorities.

Although the principle responsibility to protect the public from offenders that fall within the MAPPA remit lies with the Responsible Authorities, many other agencies play important roles in managing offenders in the community and it is through information sharing under a 'duty to co-operate' with the responsible authorities that a true reflection of offenders behaviour can be ascertained.

### The purposes of MAPPA are:

The fundamental purpose of MAPPA is public protection and the reduction of serious harm. The protection of children, adults at risk of harm and other members of the public are paramount. The MAPPA offers a co-ordinated approach to the management of those people subject to Sex Offender Notification Requirements and certain violent offenders in the community.

### How do the MAPPA work?

Offenders eligible for MAPPA are identified and information is gathered/shared about them across relevant agencies. The nature and level of the risk of harm they pose is assessed and a risk management plan is implemented to protect members of the public.

In most cases the offender will be managed under the ordinary arrangements applied by the agency or agencies with supervisory responsibility i.e. by police alone, or jointly with Criminal Justice Social Work. A number of offenders though require active multi-agency management and their risk management plans will be formulated and monitored via Multi-Agency Public Protection meetings attended by various agencies

## 2. Understanding MAPPA

### Who are the MAPPA offenders?

Category 1 Registered Sexual offenders	Category 2 Violent Offenders	Category 3 Other dangerous offenders
Sexual offenders who are required to notify the police of their name, address and other personal details and notify if their details change.	Convicted on indictment of an offence inferring personal violence, subject to statutory supervision in the community and assessed as presenting a high risk of harm	Offenders who do not qualify under Categories One or Two but who currently pose a risk of serious harm, there is a link between the offending and the risk posed, and they require active multi-agency management

### Serious Violent Offenders

Until Serious Violent Offenders (SVOs) are incorporated into the Multi-Agency Public Protection Agency Arrangements (MAPPA) it is necessary to put in place a process to manage these offenders in the community for reasons of public safety and protection. Criminal Justice Social Work Services (CJSW) are the lead agency for managing SVOs under the terms of the Management of Offenders etc (Scotland) Act 2005 but both CJSW and police forces within recognise that there requires to be a good level of communication and exchange of information to improve the management of this group of offenders. Therefore, processes are in place in the Northern CJA that mirror MAPPA and adopts the essential components for the management of sex offenders for SVOs.

Level 1 – Ordinary management	Level 2 – Active multi-agency-management	Level 3 – Active multi-agency management
These offenders are subject to the usual management arrangements applied by whichever agency is supervising them. This does not rule out information sharing between agencies, via ViSOR and other routes.	Level 2 risk management is used when the active involvement of more than one agency is required. Most level 2 offenders would be assessed as posing a high or very high risk but the level of risk management or complexity is not so great as to require referral to level 3. The risk management plans for these offenders are regularly reviewed and adapted to address current concerns.	Offenders assessed as being a <b>high or very high risk</b> of serious harm; Presents risks that can only be managed by a plan which requires close cooperation at a <b>senior level</b> . This would be due to the complexity of the case and/or because of the unusual resource commitments required; <b>OR</b> likelihood of media scrutiny and/or public interest in the management of the case is very high.

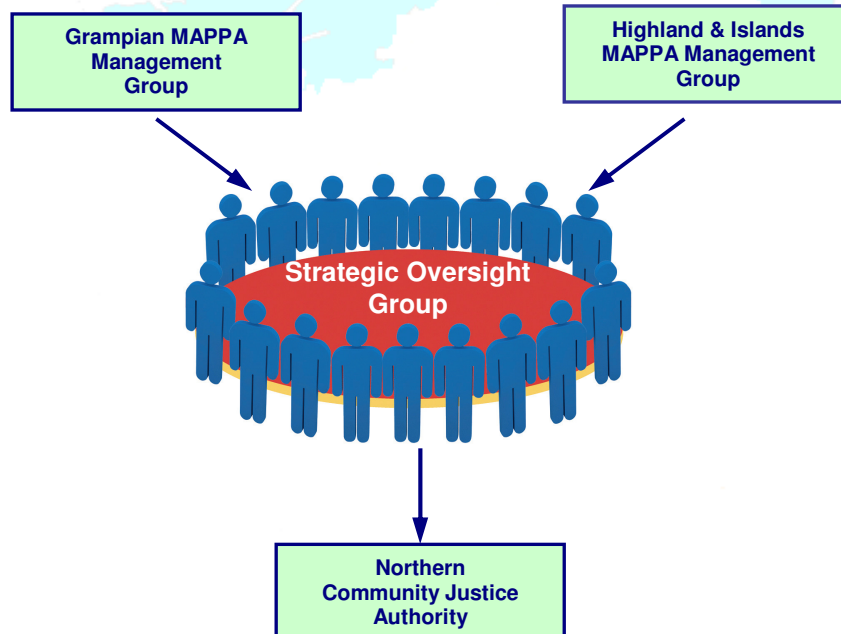
### Violent and Sex Offender Register (ViSOR)

The Violent and Sex Offender Register (ViSOR) is a UK wide database and information sharing system that is a critical factor in the successful operation of MAPPAs. Effective, appropriate sharing and recording of information allows agencies involved in supervising Registered Sex Offenders to access and share information. This provides supervising staff access to relevant offender records, for both receipt and input of information and allows a greater exchange of information with the police and other partners.

### Victims

With the main aspect of MAPPAs being the increase in protection given to the public from certain types of offenders, to achieve this it's also important to focus on victims as well as offenders. In all cases, previous and potential victims are identified within an offender's Risk Management Plan and counter measures are taken by the responsible authorities to ensure victim safety. If an offender has been sentenced to more than a 4 years custodial sentence there is a mechanism in place should the victim wish, to be informed of significant events within their sentence. Victim's views/feelings will regularly be shared with the MAPPAs group through avenues within the responsible authorities. Frequently extra conditions are added to post release licences to prohibit the offender from making any contact with victims, or even from going into specific areas where victims work/live etc.

## 3. Area Summary



## NCJA Strategic Oversight Group

The Strategic Oversight Group (SOG) is made up of senior management representatives of the key Criminal Justice Agencies and those partner organisations who have an active role in the safe management of high risk offenders, such as health and social services. In an area as geographically complex which covers the Northern CJA, maintaining a truly representative SOG is particularly problematic as there are 2 police forces, 7 local authorities each with its own social work department and 5 health boards within the NCJA and complex arrangements in respect of education, housing, employment and other agencies from whom we seek cooperation. Whilst the existing Group comprises committed representatives from a number of agencies, in the year ahead we will seek to define representation. One of the primary tasks of the SOG is to ensure that effective MAPP arrangements are in place. Having, we believe, established robust mechanisms and procedures in the course of the last three years, we plan in the year ahead to put in place effective arrangements for both monitoring and auditing in order to make sure we are regularly able to continually review and evaluate the quality, consistency and standard of work being undertaken, within MAPP. The SOG is fully committed to the safe management of high risk offenders in the community. We will continue to work both collectively and within our individual agencies, to promote, strengthen and give direction and resources to our operational colleagues who deal with cases on a day-to-day basis and who deserve the full support of their organisation in demanding and difficult roles.

### Local MAPPAs in Operation

Offenders will generally enter the MAPP process following submission of a MAPP referral by the SPS, Police or Criminal Justice Social Work. This referral will be assessed by the MAPP co-ordinator and where deemed appropriate, an initial meeting at MAPP level 2 or 3 will be set within predetermined timescales. Information shared at MAPP meetings is confidential to the agencies represented and will only be used as agreed for the protection of the public. The meeting can and will advise particular agencies of action they might take to effectively reduce and manage risk in individual cases. Usually the agencies present will agree a range of measures, which collectively form a public protection 'Risk Management Plan'. This might include, for example, restrictions or controlled measures, manageable accommodation, supervision or treatment requirements, disclosure, advice to the offender or potential victims, co-ordination of both unannounced and announced contact arrangements.

Offenders do not attend MAPP meetings; again the MAPP meeting only involves the managing agencies. The offender's views will normally be known to police or other agency representatives such as his Criminal Justice Social Work (CJSW). They are informed that they will be managed through a multi agency process and that key decisions will be relayed to them, unless the information is sensitive and requires to be kept confidential in order to protect known victims or the public in general.

Here we highlight two cases dealt with during the year which illustrate the high level of intervention and monitoring that is undertaken and the information sharing and support from other agencies, which play such a vital role in underpinning the work of MAPP.

### Case Studies

#### 1. JOHN - MAPP Level 2 Offender

John served 5 years for sexual offences against his young daughter and 2 of his granddaughters. His sentence period ended some time ago but due to the nature of his offences and length of his sentence, he will need to register as a sexual offender for the rest of his life.

One of the conditions of registration is that he must accept visits to his home by police monitoring staff. When police officers called on John's home unannounced he had a large selection of CDs and DVDs, a few of which were dispersed around his living room. When John attempted to move these away the officers became suspicious and asked to view them.

It was ultimately discovered these contained thousands of indecent images of children, some as young as 4 or 5. John has been charged prosecuted and is awaiting sentence. At the time of the visit further investigation of the home found children's cartoon DVD's and recently wrapped selection boxes as it was approaching Christmas time. John admitted that some of his family members and friends had begun to visit him again. Some of his friends also had grandchildren.

An emergency MAPP Level 2 meeting was held to bring together information to put together a family tree so that all potential child victims could be identified and strategies put in place to ensure they were protected. John received

a custodial sentence and planning will again continue throughout John's period of incarceration in readiness for his return to the community and the consequent increase in risk to children will always remain a risk factor.

## 2. Steve - MAPPA Level 3 Offender

Steve is a 30 year old sexual offender with mental health issues. Prior to release from prison he was assessed as posing a very high risk of re-offending and causing serious harm to any potential victim. Prior to his release, Steve was discussed at a Level 3 MAPPA meeting, the highest level possible. This panel consisted of Senior Police and Criminal Justice Social Work (CJSW) representatives, Scottish Prison Service, Clinical Psychologists and other Health professionals, Sex Offender Liaison Officer (Housing), Legal Manager and MAPPA co-ordinator. Because of the risk and the complex needs posed by Steve a number of agencies are required to be involved in his management in the community from the outset. At the meeting a robust Risk Management Plan was formulated which looked at both restrictive and rehabilitative measures.

The restrictive measures included:

- Steve residing at Risk Assessed Manageable Premises under a strict curfew. Whenever he was allowed outside the accommodation he was escorted by trained staff wherever he went and information readily shared amongst agencies prior to any pre-arranged visits to designated areas.

The rehabilitative measures consisted of:

- Steve taking medication for his Mental Health issues, overseen by the local Community Mental Health Team and monitored by the Clinical Psychiatrist.
- Steve to undertake offence focused work regarding his sexual offending on a one-to-one basis with trained counsellors from the Joint Sex Offender Programme (JSOP) and to work with monitoring/supervising staff to integrate him back into society.

This plan was put into operation upon release and worked very effectively. Steve undertook the work he needed to start to reduce the risk he posed and he did not breach his curfew or behave in any manner which gave the MAPPA reason to recall him back to custody. Following a number of subsequent Level 3 reviews over a period of several months, in which Steve's progression was discussed, the Risk Management Plan was amended in light of Steve's continued progress and to ensure that he continued to reduce the risk he posed. He has now moved to his own supported accommodation supplied by the local housing provider. He is visited regularly by the police and remains under the supervision of both the CJSW and the Community Mental Health team to ensure the risk he poses reduces further. The Community Mental Health team will continue to work with Steve whilst he has Mental Health needs and the Police and the CJSW will continue to work closely with Steve to further reduce the risk of reoffending he poses whilst he is subject to licence. Furthermore, the Police will monitor and visit him for life under the Sexual Offender Registration legislation.

### What MAPPA cannot do

Offenders cannot be detained in custody beyond their sentence end date however high the risk is assessed to be. Whilst police monitoring and additional tactics are part of the MAPPA toolkit in cases when an immediate risk of serious harm is assessed, this applies in a **very** small number of cases it is not realistic for police or CJSW to monitor MAPPA offenders 24 hours a day. It must also be appreciated that MAPPA deals only with offenders already convicted of sexual or serious violent offences. Offenders subject to a determinate sentence cannot be detained in custody beyond the end date of their sentence or, in the case of indeterminate life sentence prisoners, the date on which they have been ordered to be released.

## 4. Key Achievements / Objectives

### Achievements 2010/11

- The MAPPA process continues to evolve and the co-operation between agencies remain strong; all agencies within the Northern CJA continue to be fully involved in the preparation and operation of Risk Management Plans in order to reduce the risk of Re-offending
- Consistently exceeded all national key performance targets within the Northern CJA, directly relating to multi agency public protection working.
- Ensuring correct and appropriate representation at MAPPA which continues to be well represented and a priority for senior managers within responsible authorities and duty to co-operate agencies
- Protection of the public through dynamic and responsive risk assessment has continued to be a priority

- MAPPA / GIRFEC Pilot –Very Occasionally young people commit sexual or violent offences so serious that they fit within the MAPPA. For these cases it is important that MAPPA has the advice and the expertise of members of the local Youth Action Teams (YAT). Within the H&I over the last year, the collaboration between MAPPA and YAT has been a significant and positive area of development.
- Agencies in Aberdeen City have collaborated in the development of a 'Community Risk Management Protocol' in respect of young offenders and young persons who are giving serious concerns in the community. The protocol incorporates the arrangements for management of RSO's under 18 years of age in the city and means by which they will be managed in an efficient and effective manner under MAPPA. The Aberdeenshire and Moray areas are actively considering this route to ensure MAPPA/Girfec interface in the very small number of such cases that arise.
- Quality Awards – The Highlands & Islands MAPPA team won the Highland Council's prestigious award for their 'Partnership working and joint service delivery'.
- Identified and communicated improvements to the MAPPA Guidance to the Scottish Government which are relevant and proportionate to the roles and functions of representatives of the Responsible Authorities.
- Significant Case (Incident) Review – A significant case review was undertaken by a Northern representation on behalf of Grampian following a MAPPA offender being convicted of a further serious offence
- Training Programme (launch of basic MAPPA awareness/understanding website – Grampian area)
- Community Disclosure Scheme (Insert Web link) A scheme giving parents, carers and guardians the right to ask if a sex offender has access to their children has been rolled out across the country. Following a successful pilot in Tayside earlier last year.
- MAPPA Chair Training has been developed and presented to specific senior managers within the Responsible Authorities in both Northern and Grampian. Successful Awareness sessions directed towards professionals has also been undertaken.
- Successful completion of 2009/10 Delivery Plan
- Multi Agency Hub. A Multi Agency team set up in Northern Constabulary Headquarters consisting of MAPPA co-ordination team, Offender Management Unit, Child protection Team, Housing SOLO and Lead child protection adviser from NHS Highland

### Objectives 2011/12

- MAPPA Guidance V5 –We will ensure consistent implementation of the new MAPPA Guidance across all of the Responsible Authorities and Duty to Co-Operate agencies.
- We will publish and circulate the MAPPA Annual report
- We will establish a rolling 3 Year Business and Delivery Plan. This plan will guide the work of the Strategic Oversight Group (SOG) with a clear focus upon further developing MAPPA arrangements, monitoring and evaluation, training, community engagement and communication
- We will improve business alignment with related public protection boards – Adult & Child Protection Boards, MARAC (multi agency risk assessment conference in Domestic Abuse), etc.
- We will improve the use of ViSOR within the Responsible Authorities
- The Responsible Authorities will support the police in the implementation of new sex offender registration policy.
- We will ensure a robust system is in place to identify, consider, and if appropriate convene a MAPPA Serious Case Review on those MAPPA offenders who commit a serious further offence
- We will continue to build public confidence through community engagement, through the development of comprehensive communication and equality strategy documents

## 5. Statistics

Table 1: Statistical Information

REGISTERED SEX OFFENDERS (RSO's)	H&I	Grampian
<b>a) Number of Registered Sex Offenders:</b>		
i) At liberty and living in your area on 31 <sup>st</sup> March 2011:	170 (174)	267 (268)
ii) Per 100,000 of the population on 31 <sup>st</sup> March 2011:	59.14 (60.5)	49.48 (50)
<b>b) The number of RSO's having a notification requirement who:</b>		
i) Complied with notification requirements:	168 (211)	296 (296)
ii) Were reported for breaches of the requirements to notify:	3 (3)	25 (21)
<b>c) The number of "wanted" RSOs on 31<sup>st</sup> March 2011:</b>	0 (1)	0 (1)
<b>d) The number of "missing" RSOs on 31<sup>st</sup> March 2011:</b>	1 (0)	0 (1)

Table 2: Statistical information\*. This Table shows Civil Orders applied and granted in relation to RSO's.

The Number of	Applied for by Police		Granted by the courts	
	H&I	Grampian	H&I	Grampian
Sexual Offences Prevention Orders (SOPO'S)	4 (7)	5 (4)	4 (2)	5 (4)
Risk of Sexual Harm Orders (RSHO's)	0 (0)	3 (1)	0 (0)	2 (1)
SOPO'S imposed by courts at time of conviction:	N/A	N/A	0 (1)	0 (0)
Interim SOPO's	2 (5)	1 (2)	2 (5)	1 (2)
Interim RSHOS's	0 (0)	3 (1)	0 (0)	2 (1)
Full RSHOS's	0 (0)	0 (0)	0 (0)	0 (0)
Foreign Travel Orders (FTO's)	0 (0)	0 (0)	0 (0)	0 (0)
Notification Orders (NO's)	0 (0)	0 (2)	0 (0)	0 (2)

Table 3: Statistical Information\*

REGISTERED SEX OFFENDERS (RSO's)	NO OF OFFENDERS <sup>1</sup>	
Area	H&I	Grampian
<b>a) Number of RSOs managed by MAPPA Category<sup>2</sup>:</b>		
i) Level 1 – Ordinary Risk Management:	128 (132)	356 (293)
ii) Level 2 – Local Inter-agency Risk Management:	60 (48)	58 (47)
iii) Level 3 – MAPPP:	4 (2)	3 (6)
<b>b) Number of Registered Sex Offenders convicted of a further crime of sexual harm or non sexual violence:</b>		
i) MAPPA Level 1:	3 (0)	3 (9)
ii) MAPPA Level 2:	0 (0)	0 (3)
iii) MAPPP 3:	1 (0)	1 (0)
<b>c) Number of RSO's returned to custody for a breach of statutory conditions (including those returned to custody because of a conviction of further serious sexual or violent offence):</b>	9 (6)	7 (10)
<b>d) Number of RSO's returned to custody for a breach of SOPO:</b>	3 (4)	14 (7)
<b>e) Number of RSO's returned to custody for a breach of FTO:</b>	0 (0)	0 (0)
<b>f) Number of RSO's returned to custody for a breach of RSHO:</b>	0 (0)	0 (0)
<b>g) Breached their statutory conditions but were not returned to custody:</b>	3 (2)	13 (13)
<b>h) Were subject to formal disclosure:</b>	4 (7)	0 (0)

<sup>1</sup> Numbers in brackets reflect figures from 2009-2010

<sup>2</sup> These statistics represent a full year and it should be noted that offenders move between levels of management depending on identified risk which can change with changing circumstances. This is a dynamic environment where effective risk assessment and information sharing is vital. Very few offenders remain at level three for long periods as the management of risk is usually agreed and settles to allow the person to be managed at level 2 or level 1. Level three are the critical few which requires the involvement of senior management due to the high risk involved or the complexity of the situation which may require unusual resource commitment. Note: The level 1 figure should include all offenders who have been notified to the MAPPA Coordinator by the Responsible Authorities and who have not been managed at either levels 2 or 3 between the periods 1st April and 31st March. The level 2 figure should include those offenders who have not been managed at level 3 at any point between 1st April and 31st March.

Table 4:

Area	RESTRICTED PATIENTS (RP'S):		NUMBER	
	H&I	Grampian	H&I	Grampian
<b>a) Number of RP'S:</b>				
i) Living in your area on 31 <sup>st</sup> March 2011:	3 (3)	11 (9)		
ii) During the reporting year:	3 (3)	11 (9)		
<b>b) Number of RP's per order:</b>				
i) CORO:	3 (3)	11 (9)		
ii) HD:	0 (0)	0 (0)		
iii) TTD:	0 (0)	0 (0)		
<b>c) Number within hospital/community:</b>				
i) State Hospital:	0 (2)	0 (4)		
ii) Other hospital no suspension of detention (SUS):	0 (0)	2 (1)		
iii) Other hospital with unescorted SUS:	1 (1)	3 (2)		
iv) Community (Conditional Discharge):	2 (2)	6 (6)		
<b>d) Number managed by category between 1 April 2010 and 31 March 2011:<sup>3</sup></b>				
Level 1 – ordinary agency risk management:	3 (2)	8 (6)		
Level 2 – through inter agency risk:	0 (1)	3 (2)		
Level 3 – MAPPP, (critical few):	0 (0)	0 (1)		
<b>e) Number of RPs convicted of a further crime of sexual harm or non sexual violence:</b>				
i) MAPPA Level 1:	0 (0)	0 (0)		
ii) MAPPA Level 2:	0 (0)	0 (0)		
iii) MAPPP 3:	0 (0)	0 (0)		
<b>f) Number of RPs on Suspension of detention:</b>				
i) who did not abscond or offend:	1 (3)	3 (2)		
ii) who absconded:	0 (0)	0 (0)		
iii) who absconded and then offended:	0 (0)	0 (0)		
iv) where absconsion resulted in withdrawal of suspension of detention:	0 (0)	0 (0)		
<b>g) Number of RPs on Conditional Discharge:</b>				
i) who did not breach conditions, not recalled or did not offend:	2 (2)	6 (6)		
ii) who breached conditions (resulting in letter from the Scottish Government): <sup>4</sup>	0 (0)	0 (0)		
iii) recalled by Scottish Ministers due to breaching conditions:	0 (0)	0 (0)		
iv) recalled by Scottish Ministers for other reasons:	0 (0)	0 (0)		

Table 5: Number of RSO's managed under statutory conditions and/or notification requirements on 31<sup>st</sup> March 2011:

Area	Number of RSO's		NUMBER	
	No.	%age	No.	%age
On Statutory supervision:	71	41.76%	134	50.19%
Subject to notification requirements only:	99	58.24%	133	49.81%

<sup>3</sup> As per footnote 1.<sup>4</sup> As per footnote 1.

## What the statistics tell us

- The number of identified offenders included under the banner of MAPPA in the NCJA area has remained fairly consistent over the four years since implementation. On 31 March 2011, 437 offenders in the community were recorded as being subject to sex offender registration, this being 5 less offenders than at the same date in 2010. A further 123 RSO's were in custody on 31 March 2011.
- The number of registered sex offenders per 100,000 population remains within a comparative range across Scotland.
- The number of cases managed at MAPPP level 3 has increased (2 to 4) in the Northern area and reduced in the Grampian area (6 to 3) – these numbers fluctuate year to year and are not considered to be of any particular significance and are very much dependent on specific risks that surround particular individual offenders.
- The Level 3 offender recorded as further offending in the Grampian area, committed the offences during October 2009, and was convicted and sentenced in April 2010. This case has been subject of a Significant Case Review, the outcomes of which are yet to be reported.
- Of note the Level 3 offender that was returned to custody for a further serious offence within the H&I area, was not a sexual offence but one of violence and was apprehended very quickly following the offence.
- The number of offenders across the area who have been convicted of a further crime of sexual harm or non sexual violence during the period has reduced overall. The Grampian figure has reduced from 12 to 4, with the Northern figure rising from 0 to 4.
- The level of applications for, and Sexual Offences Prevention Orders (SOPO's) granted remains positive. Over time the number of SOPO's in existence has steadily grown and it follows that the number of offenders dealt with for Breach of SOPO will likely increase, as has been experienced during this period.
- It is worthy of highlight that the levels of compliance with registration requirements across the NCJA area remains very high at 95%.
- Compliance with Supervision requirements are also of a good standard, with only 15% of RSO's having such requirements being reported for breaching same. This including 8% who were returned to custody as a result.

## Equality & Diversity

MAPPA is committed to provide equal access to services for all groups, particularly in relation to race, gender, age, religious belief, sexuality, sexual orientation and disability. This means all actions undertaken or recommended by MAPPA, and all policies and procedures, will be based on assessments of risks and needs not on stereotypical assumptions about groups which would be discriminatory in outcome

## 6. Contacts

MAPPA Co-ordinator (Northern)  
Ron Lyon  
c/o Northern Constabulary  
Perth Road  
INVERNESS  
IV3 3SY

Tel 01463 720833  
[Ron.lyon@northern.pnn.police.uk](mailto:Ron.lyon@northern.pnn.police.uk)

MAPPA Co-ordinator (Grampian)  
Bill Archibald  
Unit 4/14  
Deeside Business Centre  
ABERDEEN  
AB11 9PB

Tel 01224 238420  
[Bill.Archibald@aberdeenshire.gsx.gov.uk](mailto:Bill.Archibald@aberdeenshire.gsx.gov.uk)

## Media Contact

Please contact: DCI Kenneth Anderson / Northern Constabulary Corporate Communications Tel No 01463 720396

## 7. Explanation of Terms

**Absconded (regarding RPs)** - abscond is defined as an occasion when a restricted patient is absent without authority.

**Care Programme Approach (CPA)** - a process for organising the multi-disciplinary care and treatment of patients with mental health problems. Regular review meetings are held where needs are identified and plans put in place to meet these needs. Risk assessment and risk management are an integral part of this process.

**Compulsion Order (CO)** - a disposal made by a criminal court where a person has been convicted of an offence or acquitted on account of insanity or found insane in bar of trial. The patient may be detained in hospital (which would usually be the case initially) or subject to compulsory treatment in the community. A compulsion order operates in a similar way to a CTO.

**Compulsory Treatment Order (CTO)** - a civil order under the Mental Health (Care and Treatment) (Scotland) Act 2003 which allows for the compulsory treatment of a person with mental disorder either in hospital or the community.

**Conditional Discharge (regarding RPs)** - the Tribunal is empowered to order CD when a restricted patient no longer requires to be detained in hospital. The Tribunal may impose such conditions as it sees fit. The patient is subject to recall to hospital by Scottish Ministers in the event of deterioration in the patient's mental disorder and/or breach of conditions.

**Foreign Travel Orders (FTO)** - prevent offenders with convictions for sexual offences against children, from travelling abroad where it is necessary to do so, to protect children from the risk of sexual harm.

**Formal Disclosure** - if a decision is made to formally disclose, then a letter of disclosure will be drafted on behalf of the Deputy or Assistant Chief Constable of the relevant Police Force. This letter should be served by the police personally on the person to whom the disclosure is to be made. The disclosure should be limited to the information necessary to minimise the risk. Officers serving this letter should ensure that they do not disclose any further information other than what is stipulated in the letter. Although no further information should be disclosed, advice and guidance on how the individual should respond to the information in order to protect themselves or others and in particular whether any further action. This procedure will only be advanced as a last resort and will be completed in consultation with partner agencies. There are various other forms of disclosure discussed in the body of this document.

**Integrated Case Management (ICM)** - ICM is predicated on a case conference model. This approach brings together the prisoner, their family (where appropriate) and other key staff to examine the prisoner's progress through custody. The case conference will consider the actions/interventions that are necessary to help make the prisoner's stay in custody successful. The case conference will also examine the assessed risks the prisoner poses and help decide on appropriate interventions aimed at reducing those risks. This particular approach should prove useful in

(a) keeping the prisoner at the centre of the ICM process, (b) maintaining a focus on issues which are external to the prison as well as internal, (c) the sharing of relevant information across agencies and (d) assessing and managing risk.

**Missing** - a Sex Offender should be considered as Missing in the following circumstances; where the current whereabouts of an offender is unknown and Police enquiries to establish their whereabouts have been unsuccessful. As a result of these actions the risk management process may not be achievable and there exists a requirement to trace the individual and address the risk he/she may pose and establish if further offences have been committed. Those offenders who have left the territorial jurisdiction of the United Kingdom and whose location abroad is known are not considered as missing. The requirement to comply with the registration process is suspended whilst offenders are out with the UK. Where appropriate, consideration should be given to establishing whether the offender has committed an offence relative to notification of his/her foreign travel. In this situation if an arrest warrant is issued relative to such an offence the offender should be regarded as Wanted.

**Joint Sex Offender Project (JSOP)** - JSOP deliver offence focussed programmes of change designed to reduce the risk of re-offending. Programmes are delivered on a 2-1 basis as well as in group settings. Additionally the Community Sex Offender Groupwork Programme (CSOGP), a nationally accredited programme delivered in many local authorities across Scotland. CSOGP is designed to address the offending by adult males who meet the programme's essential criteria.

**Notifiable Offence** - if someone is convicted of a sex offence they become known as a notifiable sex offender. They must provide or 'notify' the police with certain information about themselves at agreed points in time and for an agreed number of years (in some cases for life). This is what is commonly referred to as being on the Sex Offender Register. <http://www.opsi.gov.uk/acts/acts2003/ukpga20030042en6#pt2-pb1>

**Notification Order (NO)** - require sexual offenders who have been convicted overseas to register with police, in order to protect the public in the UK from the risks that they pose.

**Order For Lifelong Restriction (OLR)** - where the High Court considers that the risk criteria are met, a Risk Assessment Order (RAO) may be made after conviction and the resultant risk assessment report will inform the Court's judgement on whether an OLR should be imposed.

**Restricted Patient (RP)** - This is an offender defined under the Management of Offenders etc (Scotland) Act 2005 Section 10, (11 (a) to (d)). <http://www.opsi.gov.uk/legislation/scotland/acts2005/asp20050014en1#pb3-lg30>

**Registered Sex Offender (RSO)** - This is an offender convicted of an offence specified in the Sexual Offences Act 2003 and therefore subject to the notification requirements of this act. <http://www.opsi.gov.uk/Acts/acts2003/ukpga20030042en1>

**Restriction of Liberty Order (RLO)** - A court order requiring an offender to remain within their home at times specified by the court. Compliance is monitored electronically by the person wearing a 'Personal Identification Device' (PID) or 'tag'.

**Serious Sexual/Violent Offence** - As per the Scottish Government *Crime and Statistics Bulletin: Crime and Justice Series*. <http://www.scotland.gov.uk/Resource/Doc/239682/0066121.pdf>

This includes - Crimes of Sexual Harm or Non-Sexual Crimes of violence.

Non-Sexual Crimes of Violence - Includes murder and culpable homicide (including the statutory crime of causing death by dangerous driving or causing death by careless driving while under the influence of drink or drugs).

**NB** an assault is classified as serious if the victim sustained an injury resulting in detention in hospital as an in-patient or any of the following injuries whether or not he was detained in hospital: fractures, internal injuries, severe concussion, loss of consciousness, lacerations requiring sutures which may lead to impairment or disfigurement or any other injury which may lead to impairment or disfigurement. Robbery - includes offences involving intent to rob. Also includes threats and extortion and cruel and unnatural treatment of children.

**Crimes of Indecency** - Rape & Attempted Rape (comprises rape and assault with intent to rape.) Indecent Assault, Lewd and indecent behaviour (Previously titled "Lewd and libidinous practices") and comprises lewd and libidinous practices against children and indecent exposure. Other - includes offences connected with prostitution. For the purpose of this report will also include any Scottish Offence listed within Schedule 3 of the Sexual Offences Act 2003 Part 2. [http://www.opsi.gov.uk/Acts/acts2003/ukpga20030042\\_en\\_12](http://www.opsi.gov.uk/Acts/acts2003/ukpga20030042_en_12)

**Sexual Offences Prevention Order (SOPO)** - a court may make a SOPO at the time of dealing with certain sexual offenders or when the police make a special application on account of the offender's behaviour in the community. A SOPO will require the subject to register as a sexual offender and can include conditions, for example to prevent the offender loitering near schools or playgrounds. If the offender fails to comply with (i.e. breaches) the requirements of the order, he can be taken back to court and may be liable to up to 5 years' imprisonment.

**SOLO - Sex Offender Liaison Officer** provides a strong links between Local Authority housing staff internally, housing providers and the MAPPA process. The risk assessment of specific properties is coordinated by the SOLO through obtaining specific details of the communities from local housing staff. The decision on whether a property is suitable for an individual offender is made jointly by CJSW and the Police, although SOLO information contributes to this assessment significantly.